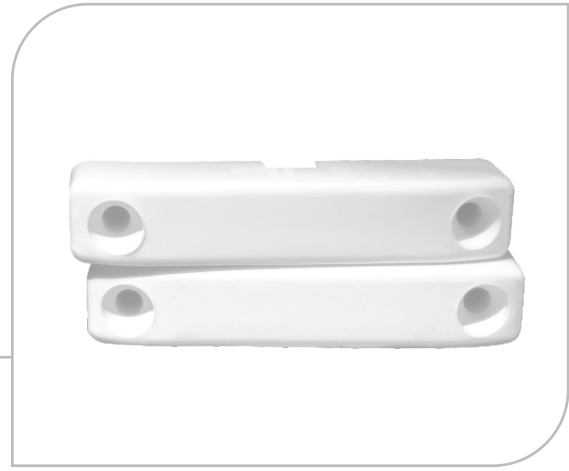




Innovation. Passion. Commitment.

SEC MS2C



FEATURES

- Magnetic Contact 2 Wire with Long Housing
- Opening Gap 15 mm
- Available in Black & White ABS Bodies

TECHNICAL SPECIFICATIONS

Operating Gap: 15mm (max)
Contact Rating: 10W, 12/24VDC, 0.5A
Contact O/P: Normally Closed
Magnet: Metallic
Body: ABS Plastic

www.securicoelectronics.com

WIRED ACCESSORIES

MAGNETIC CONTACT 2 WIRE WITH COLLAR