

# PANIC SWITCHES

Panic Switches are used to manually raise an alarm in case of an emergency. Panic switches are installed near the main entrance, in bedrooms, family areas, kitchens, prayer rooms, washrooms, cash counters, strong rooms, manager tables, security guard cabins etc.



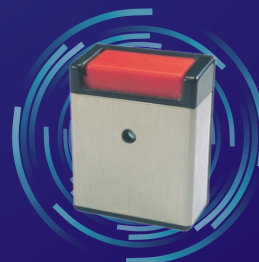
Innovation. Passion. Commitment.



## FOOT PANIC SWITCH SEC - FPSE

- Automatic Reset (No Key Required)
- Micro Switch Technology

### Other Range:



Panic Switch  
Premium



Panic Switch  
Economy