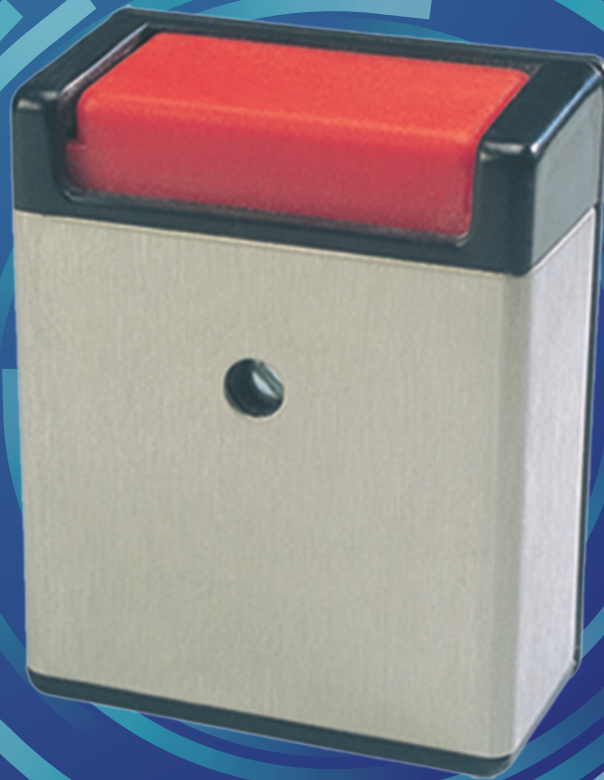


# PANIC SWITCHES

Panic Switches are used to manually raise an alarm in case of an emergency. Panic switches are installed near the main entrance, in bedrooms, family areas, kitchens, prayer rooms, washrooms, cash counters, strong rooms, manager tables, security guard cabins etc.



Innovation. Passion. Commitment.



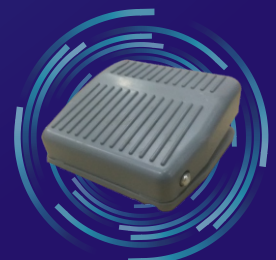
## PANIC SWITCH PREMIUM SEC - PS

- Automatic reset (no key required)
- Micro switch technology
- In-built tamper switch
- Sturdy Japanese brushed steel finish

### Other Range:



Panic Switch  
Economy



Foot Panic  
Switch